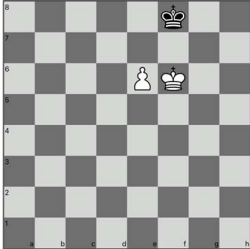


# EINDSPELTRAINING 5 januari 2023

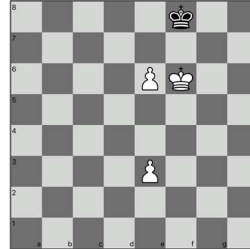
## 1. Mat met koning en toren

Werkt via ZETDWANG: achtervolg de koning op een paardsprong afstand.

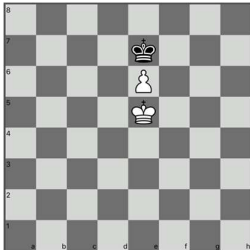
## 2. Koning en pion(nen)



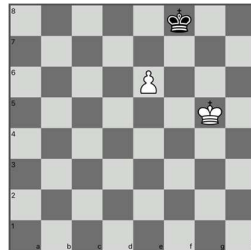
Wit aan zet remise / Zwart aan zet verliest



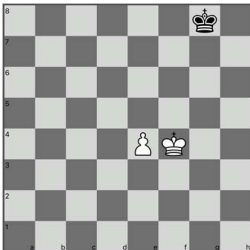
Wit wint altijd door extra tempo



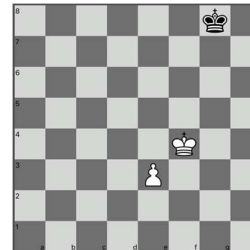
Remise



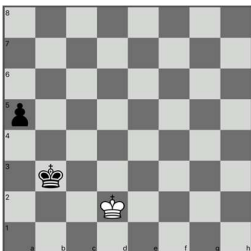
Kg7?? 1-0



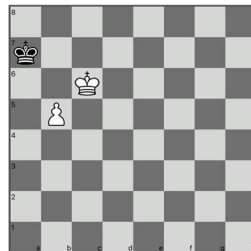
Wit aan zet Ke5! 1-0 / Zwart aan zet Kf8! ½ - ½ oppositie!



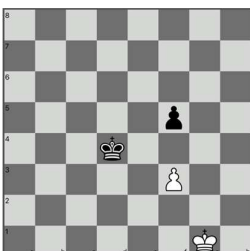
1-0 ook met zwart aan zet



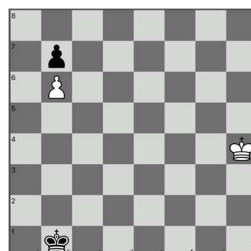
Kc1! ½ - ½



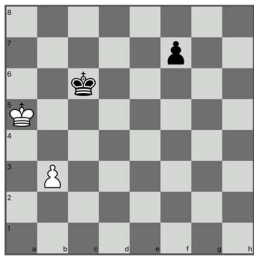
1. b6+ ?? ½ - ½ / 1. Kc7 Ka8; 2. Kb6! 1-0



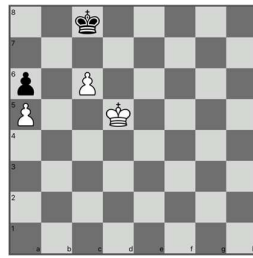
1. Kf2?? f4 0-1 / 1. f4! ½ - ½



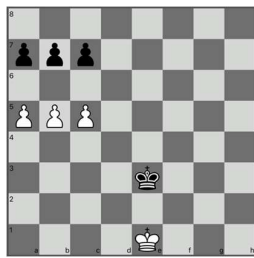
Kg3!! ½ - ½ (Kg3-f2-e1-d2-c3-b4) / Kg4? 0-1 / Kg5? 0-1



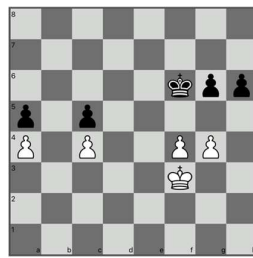
**Obstructie met Kd5! 0-1**



**1-0 via drieckfahren!**

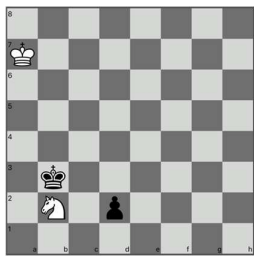


**De DOORBRAAK b6! 1-0**

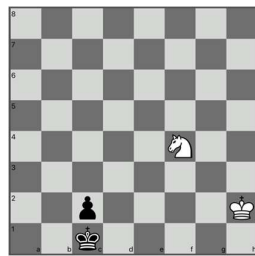


**Zwart speelt h5. Alle hens aan dek! (diverse thema's)**

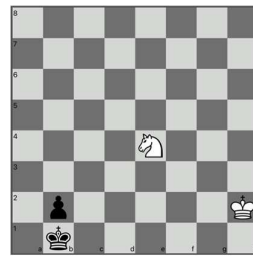
### 3. Paard tegen vrijpion



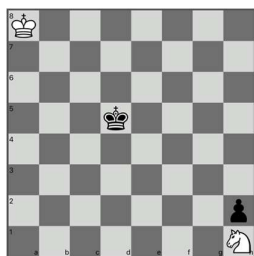
**Remise**



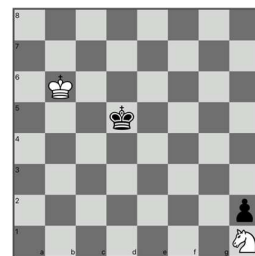
**Remise Pe2+!**



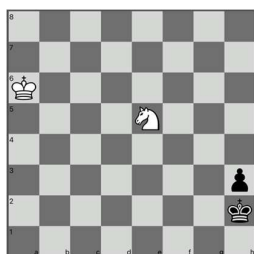
**0-1 want het paard heeft te weinig velden**



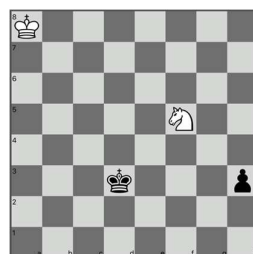
**0-1 paard in de hoek**



**1/2 - 1/2 wegens pat in de hoek**



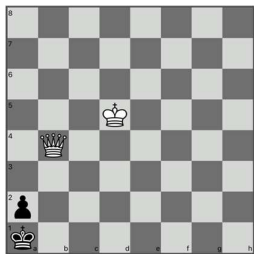
**1/2 - 1/2 via het concours hippique g4-e3-f1-h2!**



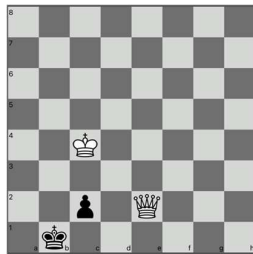
**1/2 - 1/2 dankzij de barrière Pg3!**

#### 4. Dame tegen vrijpion

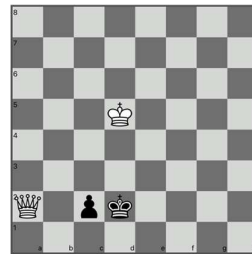
Wint altijd tegen b-, d-, e- en g-pion. Remise tegen randpion of "loperpion" wegens pat. Uitzonderingen:



1. Dd2! Kb1 2. Kc4! 1-0



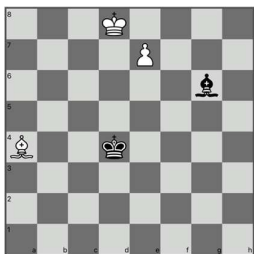
1. Kc3!! c1D+ 2. Kb3 1-0



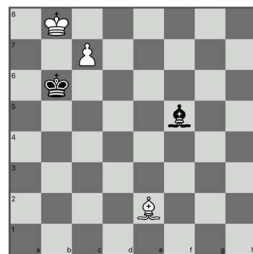
1. ... Kc3!! (enige zet) ½ - ½

#### 5. Gelijke lopers met pluspion

Potremise als de koning kan blokkeren. Zo niet dan:

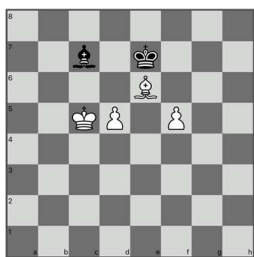


Wit aan zet wint / zwart aan zet remise

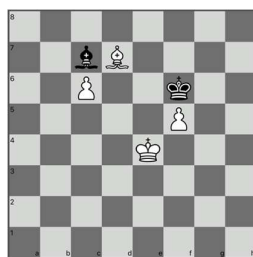


1-0 te weinig velden voor de loper

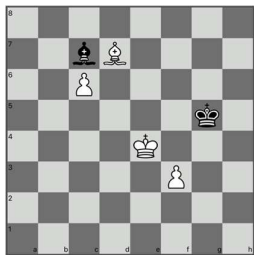
#### 6. Ongelijke lopers met twee pluspionnen



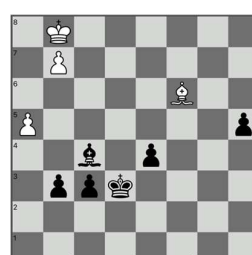
Remise



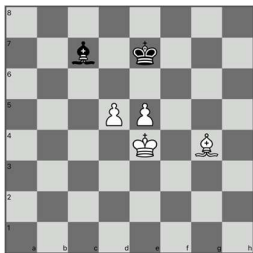
1-0 Koning naar b7



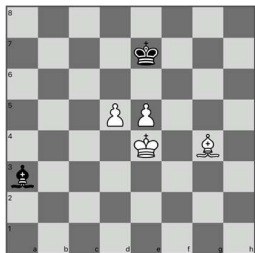
½ - ½ want loper blokkeert gelijktijdig c7 en f4



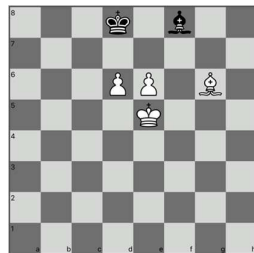
Topalov-Shirov 1998 Lh3 !!!



Remise!



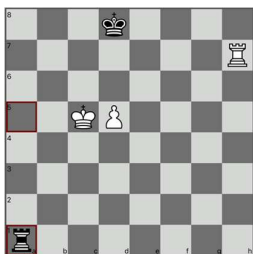
1-0 Koning naar c6



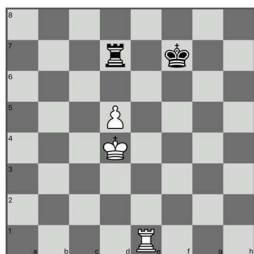
1-0 zetdwang

## 7. Torens met pluspion

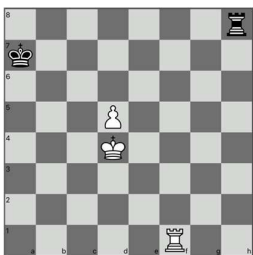
Zie ook de "Survival kit toreneindspel"!



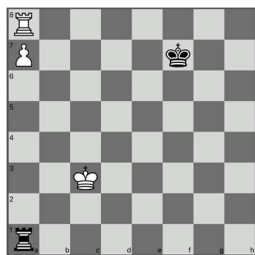
1. ... Ta6! 2. d6 Ta1! ½ - ½ (Philidor)



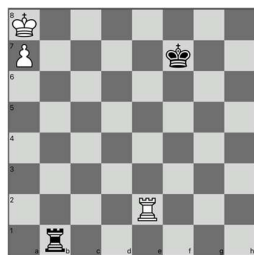
Zwart aan zet Te7! ½ - ½ / Wit aan zet Kc5 1-0



Tb1! 1-0



Kg7! ½ - ½ (enige zet)



Te2-h2-h8-b8 1-0